



Indianapolis Children's Choir
PUBLISHING HOUSE

Cradle Hymn

arr. Leeann Starkey

SA and Piano

(Optional Violin and Wind Chimes)

Artistic Director & Editor Joshua Pedde
Curriculum Coordinator & Editor Leeann Starkey



Cradle Hymn

SA with Piano, Violin (optional), and Wind Chimes (optional)

Isacc Watts

American Hymn Tune
arranged by Leeann Starkey

(♩ = 84)

Piano *mp*

Wind Chimes

Violin *mp*

All Voices *mp*

Oo

© 2022 Indianapolis Children's Choir - ICC1000

Copyright law requires customers to purchase as many digital copies as will be used.
We depend on our customers' honesty to pay our composers and keep producing music.

8

Oo

11

Oo Oo Oo

14

mf

Hush, my babe, lie

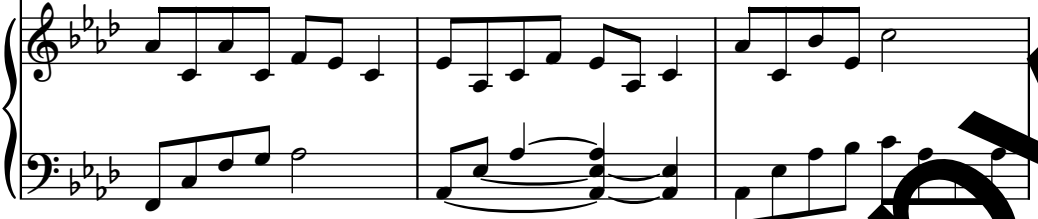
17

mf

18



still and slum-ber, Ho - ly ang - els guard thy bed!



21



Heavn' - ly bless-ings with - out num-ber ge - ly fall - ing



24



on thy head.



27

mp
mp

Oo Oo

mp

Soft and ea - sy is thy crad - le: coarse and hard thy

Detailed description: This system contains the first two staves of music. The top staff is a vocal line in treble clef with a key signature of three flats (B-flat, E-flat, A-flat) and a common time signature. It begins with a box containing the number '27'. The melody consists of quarter and eighth notes with some phrasing slurs. The second staff is a piano accompaniment in treble clef, featuring a similar melodic line with phrasing slurs. The third staff is a piano accompaniment in bass clef, providing harmonic support with chords and a steady bass line. The dynamic marking *mp* (mezzo-piano) is indicated in three places.

27

mp

Detailed description: This system contains the piano accompaniment for the second system. It consists of three staves: a treble clef staff with a melodic line of eighth notes, a bass clef staff with chords, and a grand staff (treble and bass clefs) with a bass line. The dynamic marking *mp* is present.

30

Oo Oo

Sav - iour lay, When His birth - place was a sta - ble

Detailed description: This system contains the third system of music. The top staff is a vocal line in treble clef, starting with a box containing the number '30'. The melody continues with quarter and eighth notes. The second staff is a piano accompaniment in treble clef with a melodic line and phrasing slurs. The third staff is a piano accompaniment in bass clef with chords and a bass line. The dynamic marking *mp* is present.

33

Oo Oo

and his soft - est bed was hay.

36

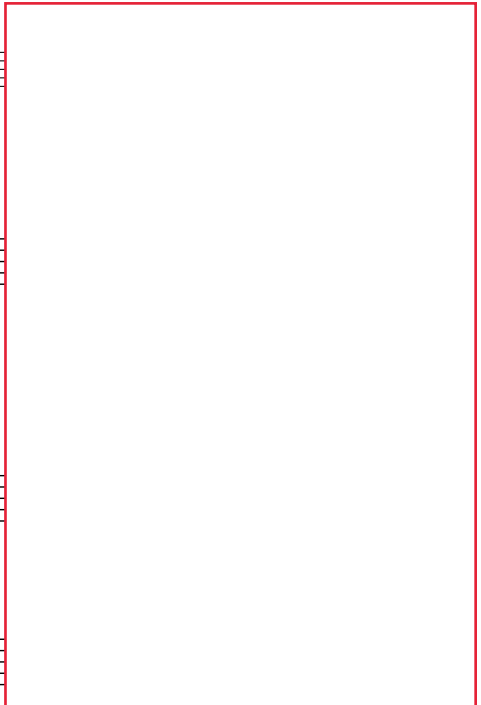
f

f

May'st thou live

37

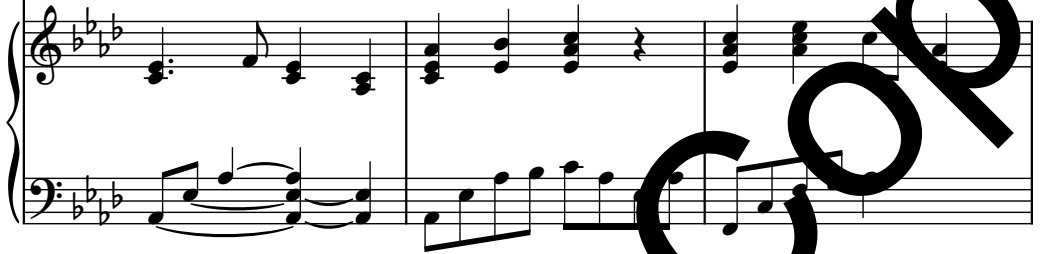
f



39



Trust and love Him all thy days; Then go dwell for -



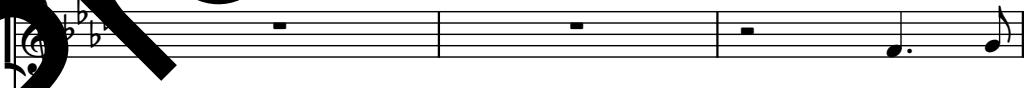
42

43



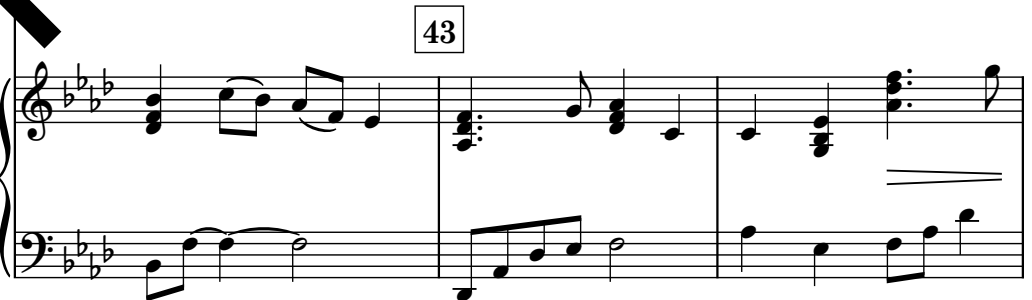
- e - e near Him See His face, and sing His praise!

mf



See His

43



Cradle Hymn

45 *molto rit.*
mp
mp
Hush, my babe,
face, and sing His praise!
molto rit.
mp

47
m
Hush, my babe, Oo
p

Violin

Cradle Hymn

Isacc Watts

arranged by Leeann Starkey

(♩ = 84)

5 *mp*

7

12 17 7

24 *mf* 27 *mp*

29

34 37

36

43 43