



# Just a Dream Away

Leeann Starkey

SA and Piano

Executive Artistic Director & Editor Joshua Pedde  
Curriculum Manager & Editor Leeann Starkey





Leeann Starkey is a dedicated music educator, conductor, and composer with a passion for enriching children's lives through music.

Leeann has conducted with the Indianapolis Children's Choir for over a decade and is a sought-after guest clinician at choral festivals and honor choirs across the Midwest. She also serves as the ICC Curriculum Manager and Co-Editor of the ICC Publishing House.

With over twenty years of experience in composing and arranging music, Leeann's expertise in choral works, particularly for children's voices, is rooted in her extensive background of singing in choirs throughout her childhood and professional career. As the Composer-in-Residence for the Indianapolis Children's Choir (ICC), Leeann composes original songs, custom arrangements, and instrumental accompaniments each season. She has been commissioned to write original choral works for notable occasions, including the 2025 Indiana Music Educators Association Elementary Honor

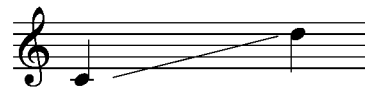
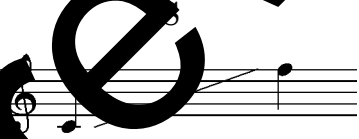
Choir, the 50th Anniversary of the Fort Wayne Children's Choir, the 20th Anniversary of the Indianapolis Children's Choir, and the 2023 Southwest Indiana Choral Festival. Her choral compositions are published by Colla Voce Music and the ICC Publishing House, and they are featured in festivals and honor choirs across North America.

Leeann graduated summa cum laude and as a Presser Scholar from Taylor University in 2008, earning a Bachelor of Music in Music Education. She then received a Master of Music in Choral Conducting from Butler University in 2012, where she studied with Henry Leck and Dr. Eric Stark. During her classroom teaching career, she taught general music and choir to preschool through 8th grade students in the Tippecanoe School Corporation and Archdiocese of Indianapolis. She also conducted the Lafayette Children's Choir of the Lafayette Master Chorale for nearly a decade.

Leeann is a member of the National Association for Music Education, Indiana Music Educator Association, American Choral Directors Association, Indiana Choral Directors Association, Organization of American Kodály Educators, and the Indiana Kodály Educators. She holds certifications in Orff Schulwerk, Kodály, Conversational Solfege, and First Steps in Music.

RANGES

A



The Indianapolis Children's Choir (ICC) and Beckenhorst Press are proud to collaborate through the Indianapolis Children's Choir Publishing House (ICCPH), established in 2022, with Beckenhorst exclusively distributing and selling ICCPH's diverse repertoire, educational materials, and books. Under the leadership of Executive Artistic Director & Editor Joshua Pedde and Curriculum Manager & Editor Leeann Starkey, ICC's publishing arm offers digital choral music, educational resources, and books for choirs of all ages, levels, genres, and voicings. These publications can be viewed and purchased on their dedicated page on the Beckenhorst website, accessible by clicking the "ICC" logo in the top left corner of the site.



# Just a Dream Away

SA and Piano

Leeann Starkey

♩ = 120

SA

Piano

*f*

5

*f*

Our fu - ture is a dream a - way, and we hold the key to shape the world with

9

pos - si - li - tie Step by step we'll lead the way\_ to be the change that's just

© 2026 Indianapolis Children's Choir - ICC1094

Copyright law requires customers to purchase as many digital copies as will be used.  
We depend on our customers' honesty to pay our composers and keep producing music.

13

a dream a - way.

17 *mf*

*mf*

How do we right each wrong in the world? How do we bring peace

22

to ev - ry boy and girl What can we do to - day to make to -

27

mor - row a bet - ter place? Help us to grow strong - er day by day.

32 *f*

Our fu - ture is a dream a - way, — and we hold the key to shape the world with

36

pos - si - bi - li - ties. Step by step we'll lead the way — to be the change that's just

40

a dream a - way.

44 *mp*

S Oo...

*mf*

A How do we mend the hearts that are torn?\_

*mf*

48 *mf*

How do we bring hope\_ to those who feel so worn. What can we do to -

*mp* *mf*

Oo... What can we do to -

53

\_ make the dark - ness fade a - way?\_ We can build a bet - ter world to -

-\_ to make the dark - ness fade a - way?\_ We can build a bet - ter world to -

58 *mf*  
-day. We are the voi - ces, we are the hands.  
*mf*  
-day. We are the voi - ces, we are the hands.  
*mf*

62  
We hold the pow - er to take a stand. No dream is too dis - tant, no hope is too small. No  
We hold the pow - er to take a stand. No dream is too dis - tant, no hope is too small. No

66  
... leng - too great for love to con - quer all.  
... leng - too great for love to con - quer all.

69 *f*

Our fu - ture is a dream a - way, Ah \_\_\_\_\_ to shape the world with

Our fu - ture is a dream a - way, and we hold the key to shape the world with

73

pos - si - bi - li - ties. Step by step we'll lead the way\_ to be the change that's just

pos - si - bi - li - ties. Step by step we'll lead the way\_ to be the change that's just

77

a dream a - way

a dream a - way.

80

a dream a - way

a dream a - way.

This section contains three staves of music. The top staff is a vocal line with lyrics 'a dream a - way'. The middle staff is a vocal line with lyrics 'a dream a - way.'. The bottom staff is a piano accompaniment. The key signature has one sharp (F#) and the time signature is 4/4. A large 'PREVIEW COPY' watermark is overlaid on the page.

83

*ff* A dream a - way!

*ff* A dream a - way!

*ff*

*Red.*

*rit.*

This section contains three staves of music. The top staff is a vocal line with lyrics 'A dream a - way!' and a forte (*ff*) dynamic marking. The middle staff is a vocal line with lyrics 'A dream a - way!' and a forte (*ff*) dynamic marking. The bottom staff is a piano accompaniment with a forte (*ff*) dynamic marking. The piano part includes a 'Red.' (ritardando) marking and a 'rit.' (ritardando) marking. The key signature has one sharp (F#) and the time signature is 4/4. A large 'PREVIEW COPY' watermark is overlaid on the page.