



Sh'ma

Dan Zshelman

SSA and Piano, Optional Cello

Artistic Director & Editor Joshua Pedde
Curriculum Manager & Editor Leeann Starkey





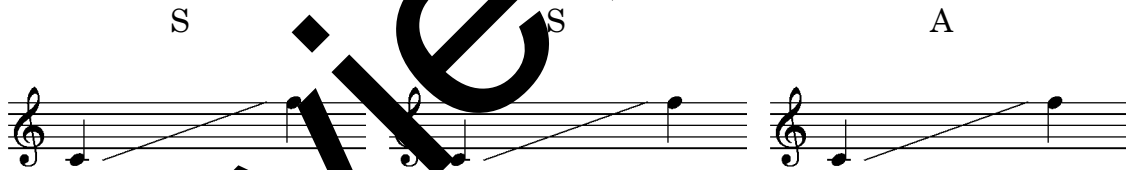
Dr. Darla Eshelman has taught all levels of music education including PK-8 elementary music, middle school choir, and university music education. Most recently she was

Founder and Artistic Director for the Central Oklahoma Solfa Youth Choirs and conductor

of Voce Spiritus, an auditioned choir for girls in grades 8-12. She recently moved back to Arizona, her home state, where she had earned her BME from Grand Canyon University, MME from Arizona State University, and began her teaching career as K-8 music and choir teacher in the Peoria School District of Phoenix. Dr. Eshelman has been guest conductor and clinician for numerous festivals and conferences around the country in the past 30 years. She left college teaching in 2019 as Professor Emerita of Music Education from the University of Central Oklahoma where she was coordinator for graduate and undergraduate vocal music education, and conductor for the university women's choir. Following that she taught again for a

PK-8 School in Oklahoma. Prior to those institutions she served 13 years at Oklahoma Baptist University where she was vocal music education coordinator and women's choir conductor. She earned her Ph.D in Music Education with Kodaly emphasis from the University of Oklahoma. Darla is a composer of choral music and has many pieces in publication. She is currently composing full-time and accepting guest conducting invitations. Also, she recently founded and is conductor for a new community girls choir – Bella Voces. She loves making beautiful choral music with any age-level. darlaeshelmanmusic.com

Vocal Ranges in this composition



The Indianapolis Children's Choir (ICC) and Beckenhorst Press are thrilled to announce the launch of the Indianapolis Children's Choir Publishing House (ICCPH), a partnership that began in January 2022. Beckenhorst Press exclusively distributes and sells ICCPH's new repertoire and educational materials for Preschool-12th grade choirs. Under the leadership of Executive Artistic Director & Editor Joshua Pedde and Curriculum Manager & Editor Leann Starkey, ICC's publishing arm releases digital choral music and educational resources for children's and youth choirs of all ages, levels, and voicings. These publications can be viewed and purchased on their dedicated page on the Beckenhorst website, accessible by clicking the "ICC" logo in the top left corner of the site.



Sh'ma

SSA and Piano, Optional Cello

Hebrew Prayer

Darla Eshelman

With deep emotion ♩ = 72

Cello

Piano

5

mp
Sh' - ma Sh' - ma Sh' - ma A - do -

mp
Sh' - ma Sh' - ma Sh' - ma A - do -

mp
Sh' - ma Sh' - ma Sh' - ma A - do -

© 2026 Indianapolis Children's Choir - ICC4059

Copyright law requires customers to purchase as many digital copies as will be used.
We depend on our customers' honesty to pay our composers and keep producing music.

9

-nai Sh' - ma Sh' - ma Sh' - ma Yis ra -

-nai Sh' - ma Sh' - ma Sh' - ma Yis ra -

-nai Sh' - ma Sh' - ma Sh' - ma Yis ra -

13

-el A - do - nai Sh' - ma Sh' - ma

A - do - nai Sh' - ma. Sh' - ma Sh'

A - do - nai Sh' - ma. Sh' - ma Sh'

17

Sh' - ma Sh' - ma oh Yis - ra - el A - do - nai Sh' - ma

- ma Sh' - ma A - do - nai Sh' - ma

- ma Sh' - ma A - do - nai Sh' - ma Sh' - ma

This system contains the first four staves of the musical score. The first staff is the bass line. The second staff is the vocal line with lyrics. The third and fourth staves are piano accompaniment. The key signature has two flats (B-flat and E-flat), and the time signature is 4/4. A large 'Preview Copy' watermark is overlaid on the right side of the page.

21

Sh' - ma Sh' - ma oh Yis - ra - el A - do - nai Sh' - ma

Sh' - ma Yis - ra - el A - do - nai Sh' - ma

Sh' - ma Yis - ra - el A - do - nai Sh' - ma

This system contains the next four staves of the musical score. The first staff is the bass line. The second staff is the vocal line with lyrics. The third and fourth staves are piano accompaniment. The key signature and time signature remain the same as in the first system. A large 'Preview Copy' watermark is overlaid on the left side of the page.

25

mf
El - o - hei - nu, El - o - hei - nu, E - - - chad

mf
El - o - hei - nu, El - o - hei - nu, E - - - chad

mf
El - o - hei - nu, El - o - hei - nu, E - - - chad

mf

29

A - do - nai. El - o - hei - nu El - o - hei - nu E - - - - chad

- o - nai. El - o - hei - nu El - o - hei - nu E - - - - chad

- do - nai. El - o - hei - nu El - o - hei - nu E - - - - chad

33

mf

mp

A - do - nai Sh' - ma. Sh' - ma Sh' -

A - do - nai Sh' - ma. El - o - hei - nu

A - do - nai Sh' - ma. Sh' - ma Sh' -

37

- ma Sh' - ma A - do - nai Sh' - ma Sh' -

o - hei - nu, E - - - chad A - do - nai. El - o - hei - nu

Sh' - ma A - do - nai Sh' - ma Sh' -

41

- ma Sh' - ma Yis - ra - el A - do - nai Sh' - ma
 El - o - hei - nu E - - - chad A - do - nai Sh' - a.
 - ma Sh' - ma Yis - ra - el - do - nai Sh' - a

45

mf Sh' - ma Sh' - ma
mf El - o - hei - nu, El - o - hei - nu,
mf Sh' - ma Sh' - ma Sh' -

48

Sh' - ma oh Yis - ra - el A - do - nai Sh' - ma

E - - - - chad A - do - nai. El - o - ha - nu

- ma A - do - nai Sh' - ma Sh' - ma

51 (repeat optional)

Sh' - ma Sh' - ma oh Yis - ra - el A - do - nai Sh' - ma.

El - o - ha - nu E - - - - chad A - do - nai Sh' - ma.

Sh' - ma Sh' - ma Yis - ra - el A - do - nai Sh' - ma (repeat optional)

molto rit. to end

55

f

A - - - do - - - nai Sh' - ma.

f

A - - - do - - - nai Sh' - ma.

f

A - - - do - - - nai Sh' - ma.

molto rit. to end

f

Musical score for Sh'ma, measures 55-60. The score includes a bass line, three vocal staves, and a piano accompaniment. The key signature is B-flat major (two flats). The tempo marking is **molto rit. to end**. The first three vocal staves have lyrics: "A - - - do - - - nai Sh' - ma." The piano accompaniment features chords and melodic lines. A large diagonal watermark "Preview Copy" is overlaid on the score.

Sh'ma

Hebrew Prayer

Darla Eshelman

With deep emotion ♩ = 72

10

16

23

37

44

50

55

mp

mf

mf

f

molto rit. to end

(repeat optional)