

Two for Two by Two for Christmas

For Three to Five Octave Handbell Choir and Organ

1. Away in a Manger

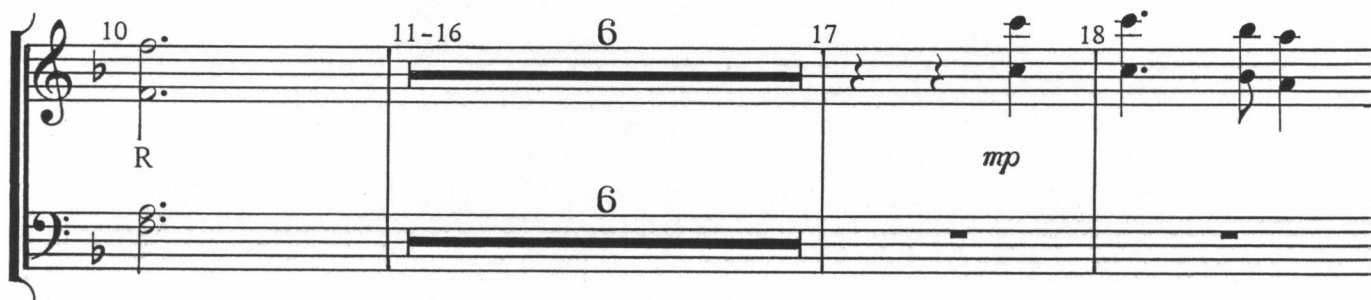
MUELLER

James R. Murray, 1887

Traditional

Arranged by JANET LINKER
and JANE McFADDEN

Bells used: 26 (30) (34)



Measures 19-23 of a musical score. The treble clef staff contains the melody, and the bass clef staff contains the accompaniment. Measure 19 starts with a treble staff note on G4 and a bass staff whole rest. Measure 20 has a treble staff note on A4 and a bass staff whole rest. Measure 21 has a treble staff note on B4 and a bass staff half note on G3. Measure 22 has a treble staff note on C5 and a bass staff half note on A3. Measure 23 has a treble staff note on D5 and a bass staff half note on B3. Arrows indicate voice leading from the bass staff to the treble staff in measures 21, 22, and 23.

Measures 24-28 of a musical score. The treble clef staff contains the melody, and the bass clef staff contains the accompaniment. Measure 24 has a treble staff note on E5 and a bass staff whole rest. Measure 25 has a treble staff note on F5 and a bass staff whole rest. Measure 26 has a treble staff note on G5 and a bass staff half note on C4. Measure 27 has a treble staff note on A5 and a bass staff half note on D4. Measure 28 has a treble staff note on B5 and a bass staff half note on E4. Arrows indicate voice leading from the bass staff to the treble staff in measures 24, 25, and 26.

Measures 29-33 of a musical score. The treble clef staff contains the melody, and the bass clef staff contains the accompaniment. Measure 29 has a treble staff whole rest and a bass staff half note on F3. Measure 30 has a treble staff note on G4 and a bass staff half note on G3. Measure 31 has a treble staff note on A4 and a bass staff half note on A3. Measure 32 has a treble staff note on B4 and a bass staff half note on B3. Measure 33 has a treble staff note on C5 and a bass staff half note on C4. Arrows indicate voice leading from the bass staff to the treble staff in measures 29 and 30.

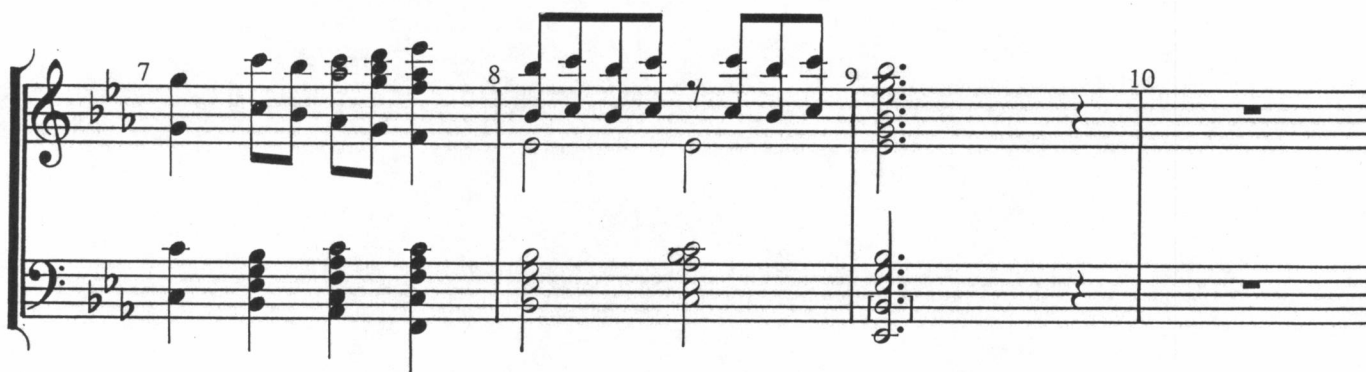
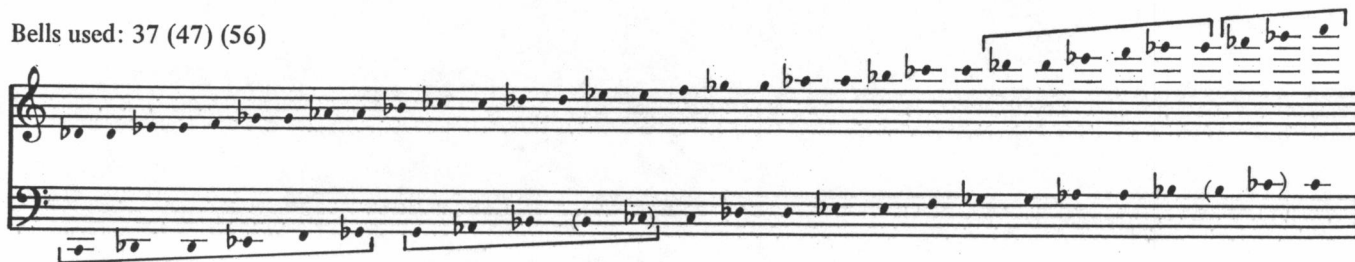
Measures 34-37 of a musical score. The treble clef staff contains the melody, and the bass clef staff contains the accompaniment. Measure 34 has a treble staff note on D5 and a bass staff whole rest. Measure 35 has a treble staff note on E5 and a bass staff whole rest. Measure 36 has a treble staff note on F5 and a bass staff whole rest. Measure 37 has a treble staff note on G5 and a bass staff half note on D3. Arrows indicate voice leading from the bass staff to the treble staff in measures 34, 35, and 36. The label "LV" is written in the bass staff in measures 34, 35, and 36.

Measures 38-41 of a musical score. The treble clef staff contains the melody, and the bass clef staff contains the accompaniment. Measure 38 has a treble staff note on A5 and a bass staff whole rest. Measure 39 has a treble staff note on B5 and a bass staff whole rest. Measure 40 has a treble staff note on C6 and a bass staff half note on E3. Measure 41 has a treble staff note on D6 and a bass staff half note on F3. Arrows indicate voice leading from the bass staff to the treble staff in measures 38 and 39. The label "mf" is written in the treble staff in measure 41.

2. Hark! The Herald Angels Sing

MEDELSSOHN
Felix Mendelssohn, 1840
Arranged by JANET LINKER
and JANE McFADDEN

Bells used: 37 (47) (56)



Measures 15, 16, and 17 of a musical score. The key signature has two flats (B-flat and E-flat). Measure 15 features a treble staff with a quarter rest followed by eighth-note pairs (F4, G4), (A4, Bb4), and (C5, Bb4), and a bass staff with a whole rest. Measure 16 has a treble staff with eighth-note pairs (C5, Bb4), (A4, Bb4), and (G4, F4), and a bass staff with a half note chord (F3, Bb2). Measure 17 has a treble staff with a quarter rest followed by eighth-note pairs (A4, Bb4) and (G4, F4), and a bass staff with a whole rest.

Measures 18, 19, and 20 of a musical score. Measure 18 has a treble staff with a half note chord (F4, Bb4) and a bass staff with a whole rest. Measure 19 has a treble staff with a quarter rest followed by eighth-note pairs (A4, Bb4) and (G4, F4), and a bass staff with a whole rest. Measure 20 has a treble staff with a half note chord (F4, Bb4) and a bass staff with a whole rest.

Measures 21, 22, and 23 of a musical score. Measure 21 has a treble staff with a quarter rest followed by eighth-note pairs (A4, Bb4) and (G4, F4), and a bass staff with a half note chord (F3, Bb2). Measure 22 has a treble staff with a half note chord (F4, Bb4) and a bass staff with a half note chord (F3, Bb2). Measure 23 has a treble staff with a whole rest and a bass staff with a whole rest.

Measures 24, 25, and 26 of a musical score. Measure 24 has a treble staff with a quarter rest followed by eighth-note pairs (A4, Bb4) and (G4, F4), and a bass staff with a whole rest. Measure 25 has a treble staff with a half note chord (F4, Bb4) and a bass staff with a half note chord (F3, Bb2). Measure 26 has a treble staff with a half note chord (F4, Bb4) and a bass staff with a half note chord (F3, Bb2).