

Commissioned by the Greater Dallas Handbell Association for the 1994 Winter Conferences;
and written in loving memory of my parents, Adella Gross Neufeld and Wesley R. Neufeld.

The Staff of Faith

For Three to Six Octave Handbell Choir and Optional Flute*

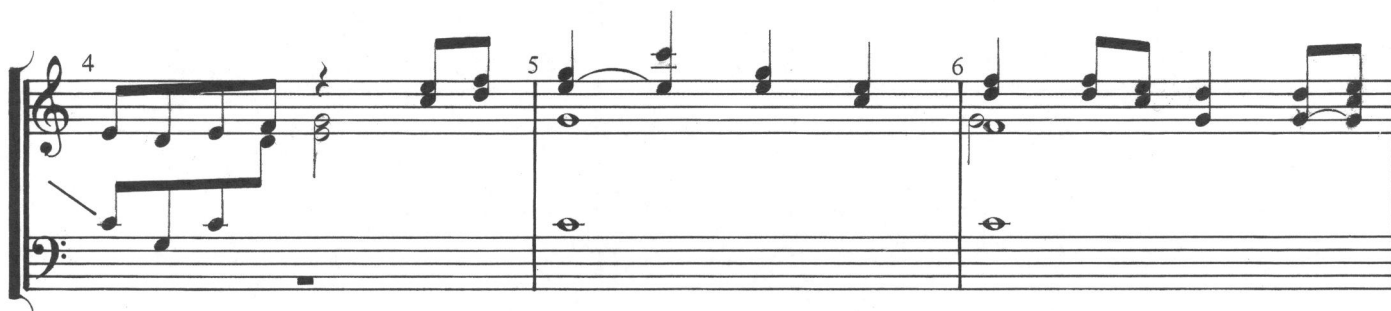
Traditional Swiss Melody
(Pilgrim Hymnal)

Arranged by MARGARET R. TUCKER

Bells used: 33, (40), (48), (50)



$\text{♩} = 92-96$



*A separate Flute part (HB138A) is available from the publisher.

**G₇ is not used with 4 octave sets.

HB138-2

© Copyright 1994 by Beckenhorst Press, Inc. All rights reserved.

Measures 11, 12, and 13 of a musical score. Measure 11 features a treble clef with a series of eighth notes and a bass clef with a single note. Measure 12 continues the treble line with eighth notes and the bass line with a single note. Measure 13 shows the treble line with a dotted half note and the bass line with a single note. A bracket with an asterisk (*) is placed above the treble staff at the end of measure 13.

Measures 14, 15, and 16 of a musical score. Measure 14 features a treble clef with a series of eighth notes and a bass clef with a single note. Measure 15 continues the treble line with eighth notes and the bass line with a single note. Measure 16 shows the treble line with a dotted half note and the bass line with a single note.

Measures 17, 18, and 19 of a musical score. Measure 17 features a treble clef with a series of eighth notes and a bass clef with a single note. Measure 18 continues the treble line with eighth notes and the bass line with a single note. Measure 19 shows the treble line with a dotted half note and the bass line with a single note. The letters "LV" are written below the treble staff in measure 17, and "R" is written below the treble staff in measure 18.

Measures 20, 21, and 22 of a musical score. Measure 20 features a treble clef with a series of eighth notes and a bass clef with a single note. Measure 21 continues the treble line with eighth notes and the bass line with a single note. Measure 22 shows the treble line with a dotted half note and the bass line with a single note.

*5 and 6 octave sets may double melody an octave higher in passages marked by [*].

HB138-3

23 24 25 - Flute

LV

26 27 28 + Flute

LV

dim. *rit.* *mp*

Slower ♩ = 76 - 80

29 30 31

R *Pl. (R) Pl. simile

LV p 32 33 34 R

*Pluck lift or soft Mart. lift all notes with staccato dots. (meas. 29-48).

System 1, measures 35-37. Treble clef, key signature of two flats. Measure 35: Treble has eighth-note chords, bass has a half note. Measure 36: Treble has eighth-note chords, bass has a half note. Measure 37: Treble has eighth-note chords, bass has a half note. Above measure 37, "LV" is written. Below measure 37, "LV" and "cresc." are written.

System 2, measures 38-41. Treble clef, key signature of two flats. Measure 38: Treble has eighth-note chords, bass has a half note. Above measure 38, "- Flute" and "LV" are written. Measure 39: Treble has eighth-note chords, bass has a half note. Above measure 39, "R" and "f" are written. Measure 40: Treble has eighth-note chords, bass has a half note. Measure 41: Treble has eighth-note chords, bass has a half note. Above measure 41, "LV" is written. Below measure 41, "(R)" is written.

System 3, measures 42-44. Treble clef, key signature of two flats. Measure 42: Treble has eighth-note chords, bass has a half note. Above measure 42, "LV" is written. Measure 43: Treble has eighth-note chords, bass has a half note. Above measure 43, "R rit. e dim." is written. Measure 44: Treble has eighth-note chords, bass has a half note. Above measure 44, "pp" and "p" are written. Below measure 44, "slower" is written.

System 4, measures 45-48. Treble clef, key signature of two flats. Measure 45: Treble has eighth-note chords, bass has a half note. Above measure 45, "pp" and "slower" are written. Measure 46: Treble has eighth-note chords, bass has a half note. Above measure 46, "ppp" and "p" are written. Measure 47: Treble has eighth-note chords, bass has a half note. Above measure 47, "- Flute" and "a tempo" are written. Below measure 47, "(R)" is written. Measure 48: Treble has eighth-note chords, bass has a half note.