

To our sons, J. D., Kevin, Jeff and Tim.

Come, Ye Thankful People, Come

For Three to Five Octave Handbell Choir and Organ

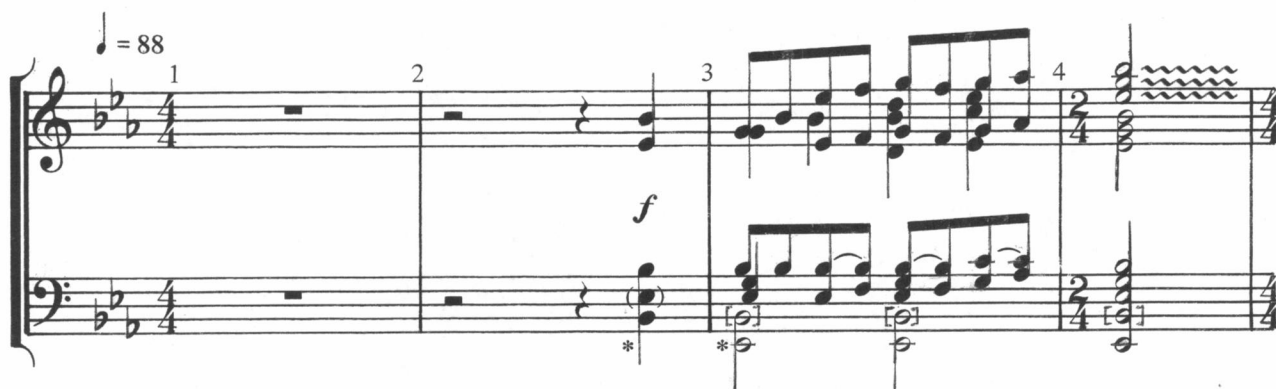
ST. GEORGE'S WINDSOR

George J. Elvey, 1858

Arranged by JANET LINKER

and JANE McFADDEN

Bells used: 37 (49) (59)



*Three Octave choirs do not ring notes in (); Four Octave choirs do not ring notes in []

13 14 15 16

Measures 13-16 of a musical score. The key signature has three flats (B-flat, E-flat, A-flat). The melody in the treble clef consists of eighth and quarter notes. The bass line consists of quarter and eighth notes.

17 18 19 20

Measures 17-20. Measure 17 has a fermata over the first eighth note. Measures 18-20 feature a more complex texture with chords and moving lines. An arrow points to a specific note in measure 20.

21 22 23 24

Measures 21-24. The melody continues with eighth and quarter notes. The bass line provides a steady accompaniment.

25 26 27 28

Measures 25-28. Measure 25 has a fermata over the first eighth note. Measures 26-28 show increasing complexity with more chords and moving lines.

29 30 31 32

Measures 29-32. Measure 29 has a fermata over the first eighth note. Measure 31 has a *mp* (mezzo-piano) dynamic marking. Measure 32 ends with a final chord.

A little slower $\text{♩} = 84$

40 41 42 LV LV

The musical score for 'The Rose Tree' is presented in two systems. The first system contains measures 43, 44, and 45. The second system contains measures 46, 47, and 48. The music is written for a treble and bass clef in 2/4 time. The melody is in the treble clef, and the accompaniment is in the bass clef. The key signature has two flats (B-flat and E-flat). The tempo is marked 'Allegretto' and the dynamics are 'p' (piano) and 'f' (forte). The score includes various musical notations such as notes, rests, and bar lines. The lyrics are written below the bass line.

System 1, measures 46-48. Measure 46: Treble clef, key signature of two flats, bass clef. Measure 47: Treble clef, marked *p* (piano), LV (left hand) and R (right hand) markings. Measure 48: Treble clef, marked *mf* (mezzo-forte), LV and R markings. The system concludes with a double bar line.

System 2, measures 49-51. Measure 49: Treble clef, marked *p*, LV and R markings. Measure 50: Treble clef, marked *mf*, LV and R markings. Measure 51: Treble clef, marked *mf*, LV and R markings. The system concludes with a double bar line.

System 3, measures 52-54. Measure 52: Treble clef, marked *p*, LV and R markings. Measure 53: Treble clef, marked *mf*, LV and R markings. Measure 54: Treble clef, marked *mf*, LV and R markings. The system concludes with a double bar line.

System 4, measures 55-57. Measure 55: Treble clef, marked *p*, LV and R markings. Measure 56: Treble clef, marked *mf*, LV and R markings. Measure 57: Treble clef, marked *pp* (pianissimo), LV and R markings. The system concludes with a double bar line and a 3/4 time signature.