

# Face the Cross

For SATB Choir, Soloist, Keyboard and optional Flute\*

Herb Frombach  
(ASCAP)

DAVID LANTZ III  
(ASCAP)

**Tenderly** ♩ = ca. 76

**\*\* p** *unis. no vibrato, very tenderly*

Soprano  
Alto

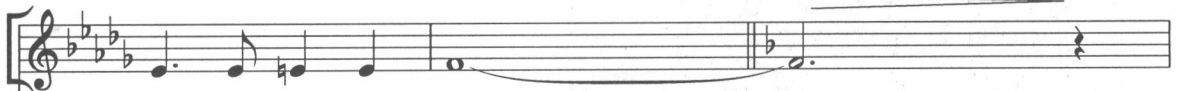


Up - on the cross of Je - sus my eye at times can

*stagger breathing*



see the ver - y dy - ing form of One who

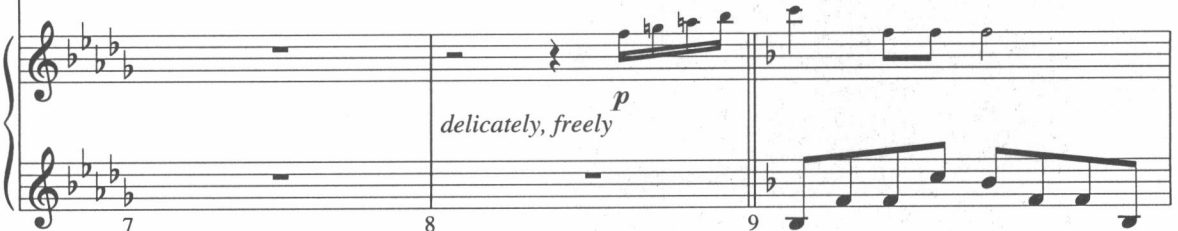


suf - fered there for me.

Flute



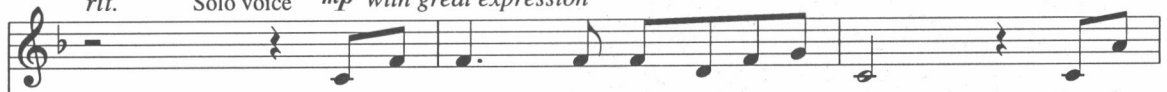
*delicately, freely p*



*delicately, freely p*

*rit.*

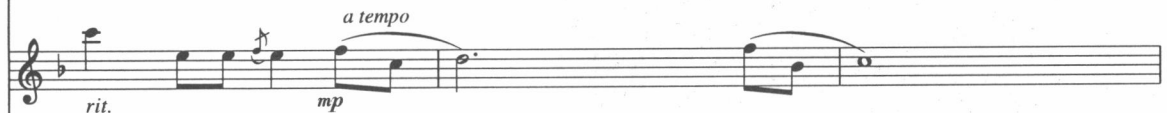
*a tempo*  
**mp** *Solo voice with great expression*



Face the cross, He hangs there in your place. See the

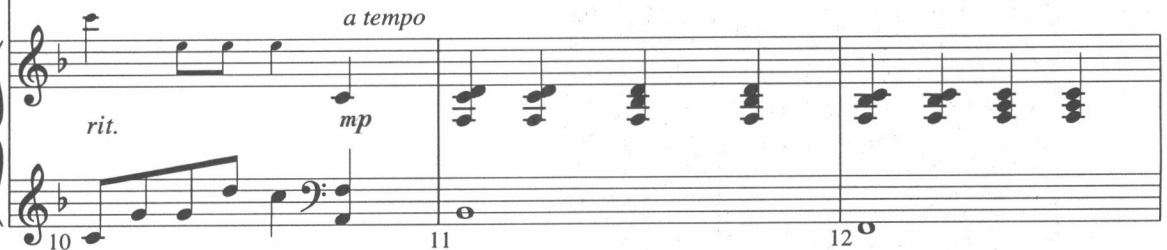
*rit.*

*a tempo*  
**mp**



*rit.*

*a tempo*  
**mp**



\* Flute part is on page 12.

\*\* Beneath the Cross of Jesus - Tune: ST. CHRISTOPHER, by Frederick C. Maker (1844-1927);  
Words: Elizabeth C. Clephane (1839-1869), alt.

© Copyright 2006 by Beckenhurst Press, Inc. All rights reserved.

BP1773-2

The CCLI License does not grant permission to photocopy this music.

Lamb up - on the kill - ing tree. Stand and look in - to the Sav - ior's

13 14 15

(end solo)

face as on the cross, He dies for you and me.

16 17 18

SA unis. *mp* Face the cross and see the dy - ing Son. See the

TB unis. (opt. Ten. only) *mp* Face the cross.

19 20 21

Lamb up-on the kill-ing tree.

See His an - guish and His tears of

See the Lamb. See His an - guish, His

(+ Bass)

22 23 24

love.

Face the cross,

He dies to set us free.

tears of love.

Face

the

cross.

25 26 27

*mf cresc.**f**dim.*

Turn not a-way, — turn not a-way.

His nail-pierced hands are reach - ing out to

*mf cresc.**unis. f**dim.*

Turn not a-way, — turn not a-way. His nail-pierced hands are reach - ing out to

28 29 30 31

you. ———— *mf* Look up - on, up -

you, to — you. Look up - on the One with-out a

*mf*

32 33 34

on the One ———— up - on the kill - ing tree.

sin, Spot-less Lamb up-on the kill-ing tree. Feel His

35 36 37