

I Ponder

For SATB Choir and Keyboard

Pamela Martin

CRAIG COURTNEY
(ASCAP)

Freely, unhurried, ♩ = 90

SA unis. *mp*



The heav - ens are



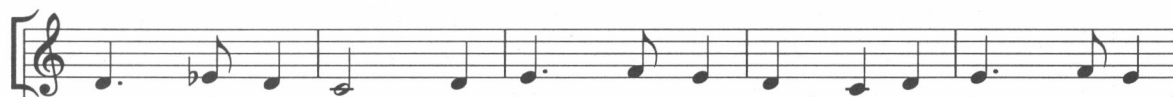
Red.

* *Red.*

* *simile*



si - lent, the wise men have gone, The flur - ries of an - gels have



fin - ished their song. The shep - herds have long since re - turned to their



© Copyright 2005 by Beckenhurst Press, Inc. All rights reserved.

BP1727-2

The CCLI License does not grant permission to photocopy this music.

cresc. *SA div. mf*

sheep, The sta - ble is emp - ty, the star fast a - sleep. I

T mf

B

16 17 18 19 20

pon - der the won - ders I car - ry in - side: A

mf

21 22 23 24

star bright as dia - monds, an eb - on - y sky, The

25 26 27 28

dim. poco a poco

shep - herd who cra - dles a lit - tle white lamb, The

dim. poco a poco

29 30 31 32

p

wise man who of - fers the gold in his hand.

p

33 34 35 36 37

unis. mp

That Beth - le-hem eve - ning is far, far a -

unis. mp

mp

38 39 40 41

way From the world where I live, the world of to -

42 43 44 45

day. I pause and I pon - der, a mir - a - cle

46 47 48 49

cresc.
starts, The Sav - ior is born once a - gain in my
cresc.

cresc.
50 51 52 53